

520 South Main Street
Suite 2531
Akron, OH 44311
PH 330.572.2100
FX 330.572.2102

The Akron Architectural Group

Braun & Steidl Architects ■ GPD Group ■ Hasenstab Architects, Inc. ■ Moody Nolan, Inc. ■ TC Architects, Incorporated ■ URS

AKRON PUBLIC SCHOOLS

Community Planning Meeting #3
Findley Community Learning Center
Tuesday, February 4, 2004 @ 5:30 p.m.

In Attendance

J. Wheeler.....	AAG
K. Bishop.....	AAG
R. Habel.....	AAG
D. Loomis.....	APS
C. Smith.....	APS
H. Hennes.....	APS
N. Parish.....	APS
F. Tomcsak.....	APS
C. Kline.....	APS
K. Shippy.....	APS
K. George.....	APS
M. Nardell.....	APS
B. Horovitz.....	APS
L. Duncan.....	City of Akron
T. Long.....	City of Akron
N. Way.....	CPT
K. Bishop.....	CPT
C. Collins.....	CPT
K. Wolf.....	CPT
T. Pogwizd.....	CPT
S. Sarli.....	CPT
C. Pinto.....	CPT
H. Tomic.....	CPT
B. Hanlon.....	CPT
B. Valentine.....	CPT
D. Parker.....	CPT
S. Stock.....	CPT
T. Dain.....	CPT
H. Day.....	CPT
R. DiFrangia.....	CPT

Distribution

AAG Project Managers	
M. Salopek.....	AAG
D. Mitchell.....	AAG
D. Loomis.....	Akron Public Schools
J. Beal.....	Akron Public Schools
K. Ingram.....	Akron Public Schools
L. Duncan.....	City of Akron
T. Long.....	City of Akron
M. Williamson.....	City of Akron
D. Krutz.....	RKPS
L. Jennings.....	Burges and Burges

The following is a review of items discussed at the meeting:

- J. Wheeler opened the meeting by introducing himself and other members of AAG and proceeded to review the meeting agenda for P.O.R. #3.
- J. Wheeler opened the floor for questions and comments regarding the Alliance School tours and showed photos to the group from those tours.
- One group of teachers composed a list of likes and dislikes after going to Alliance.

Following is a list of items the teachers liked:

- ✓ "Swiss Army" Tables in Auditoria
- ✓ Multicolored Gym versus Plain, Monochromatic Colors
- ✓ In-class Student Storage (did not like small cubbies)
- ✓ Entrance Through Office During School Day (at the Middle School in particular because of security reasons)
- ✓ Wood Trim Around Doors and Windows (liked natural colors versus plain gray laminate)
- ✓ Wood Laminate Furniture in Middle School (instead of gray and white of Elementary)
- ✓ Waiting Space for Counselor at Middle School
- ✓ Classroom Door to Outside at Middle School
- ✓ Lockers (preferred because they are able to be closed versus the cubbies that are open)
- ✓ Warm Colors at Middle School
- ✓ Windows Open with Enclosed Blinds (did not like blinds added as afterthought)
- ✓ Windows From Classroom Looking Toward Hallway
- ✓ Style of Classroom Furniture
- ✓ Nook in Kindergarten Room (possibly in other rooms as well)

Following is a list of items the teachers did not like:

- ✓ Restrooms had Four Girls' Stalls, Boys' had Two Stalls and Two Urinals (concern was that this is not enough for one entire class to use Restroom at same time)
- ✓ Division of Staff Restrooms from Student Restrooms (staff restroom should be located near student restrooms and possibly have two stalls)
- ✓ Not Enough Storage in Classrooms (should be open shelves and enclosed cupboards)
- ✓ Elementary School Principal Too Removed From Main Office (preferable to have Principal up front for presence and visibility) (Principal's office could have window looking toward offices)
- ✓ Cubbies in Classrooms Too Small for Winter Coats, Backpacks, and Boots
- ✓ Clinic Too Large and Too Near Central Office
- ✓ White Furniture
- ✓ Hallway Not Large Enough for Passing of Two Classes (should be same size currently at Findley) (J. Wheeler illustrated that the typical corridor size for a school is 10' to 12')

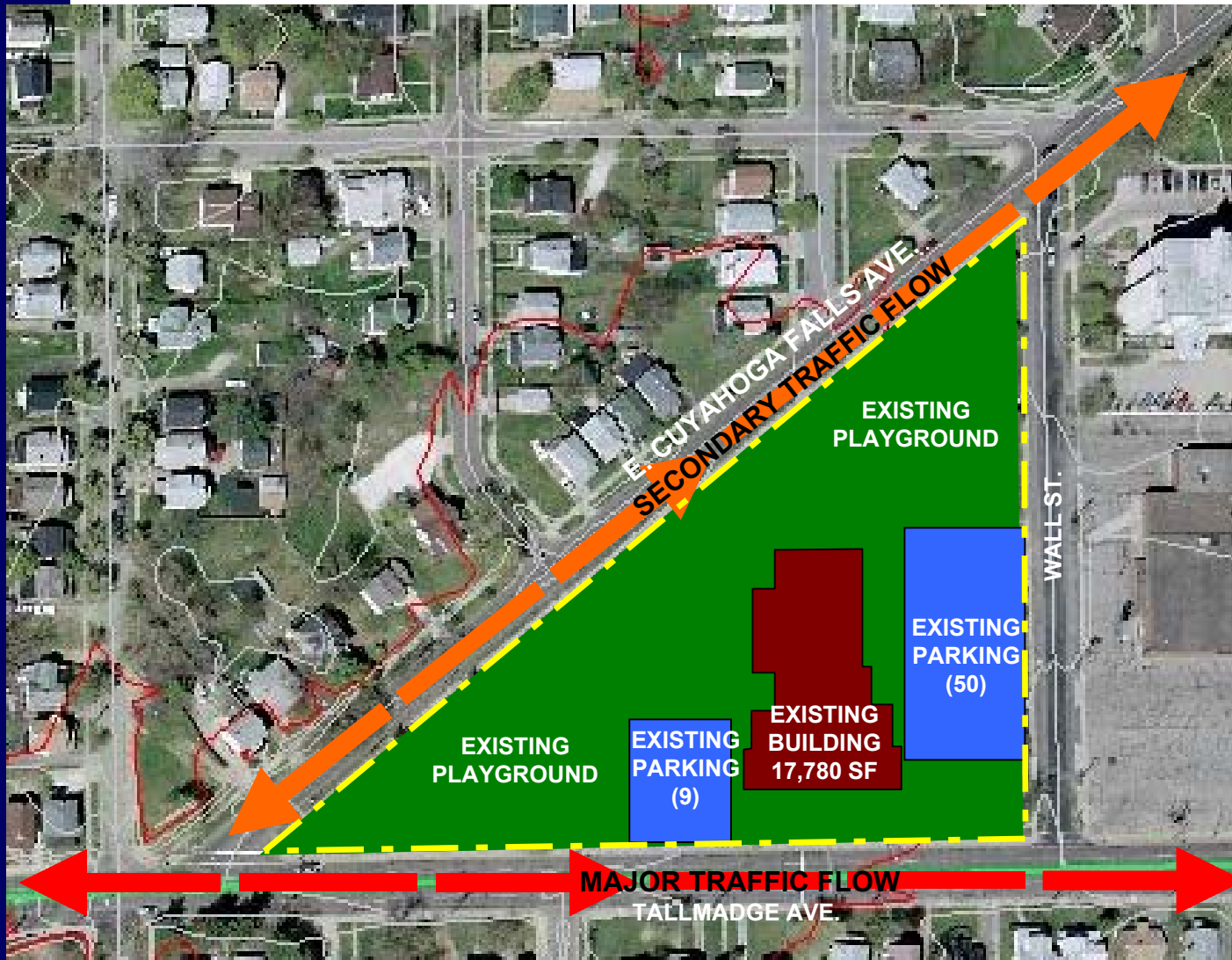
- ✓ Auditoria Not Large Enough, Resulting in Four to Six Lunch Periods (Principal Butz noted that a Cafeteria would accommodate at least 200 students at any one time and Finley would have two lunch periods)
 - ✓ Not Enough Smaller Classrooms for Tutors and Small Group Instruction (hallways are not instructional spaces, especially in newer models)
 - ✓ No Windows in Tutor's Room
 - ✓ Cool Colors at Elementary School
 - ✓ Chairs are Too Heavy for Primary Students
 - ✓ Alliance Schools Opened Enrollment Above Building Sizes (one example of this is evidenced by the problem of the Music Room needing to be changed to an instructional classroom at Middle School)
 - ✓ Workrooms at End of Corridors are a Problem Because of Separation from Other Instructional Spaces
- J. Wheeler asked whether the teachers felt they needed a computer lab as well as 4-5 data ports within the classroom, which could be seen at both Alliance schools but wasn't included in the Findley Community Learning Center POR. Teachers didn't see a need for a computer lab.
 - Teachers commented that they liked the storage inside the classroom versus outside in the hallway because of supervision and control. Cubby or locker sizes needed to be larger.
 - Teachers commented that teacher storage in the classrooms above cubbies is unsightly because it is open. They asked that the storage be closed. J. Wheeler presented a possible solution of enclosing the storage with doors (seen at Art Rooms at Middle School in Alliance).
 - One Teacher commented that higher ceiling heights are preferred to lower ceiling heights because of the open feel and character the higher ceilings present and also added that it may be an adjustment moving from Findley which has higher ceilings to a new facility that may have lower ceilings.
 - Teachers illustrated that they did not like the fact that the whiteboards at the Middle School were hung at the height of the door, which was too high for both the teacher and the students to use. R. Habel stated that this will be taken into consideration.
 - Principal Butz illustrated that the Polkhill building layout and shape could cause visibility problems on the exterior of the building. This is not good for security reasons. He also stated that the current Findley building is successful because it is visible from all sides and easy to secure.
 - One Teacher commented that if the bathrooms have large sinks outside the bathroom, the paper towel dispensers should be at the outside of the bathroom as well as the trashcans so that the children do not have to go back in to dry their hands.
 - The Maintenance person asked what material will be used for the flooring in the new Community Learning Center. He stated that he prefers a sustainable material such as marble that will last for over one hundred years. J. Wheeler commented that it is possible to use other durable materials such as sheet rubber flooring or a vinyl composition tile that will last longer than some other floor materials and be appropriate for the uses in these areas.
 - One teacher asked if it was possible to have glass that is unbreakable but transparent in the Community Learning Center's windows and exterior for vandal resistance.
 - J. Wheeler presented three different schematic site plan schemes, Options A, B, and C and the pros and cons of each scheme. He then opened the floor for additional pros and cons the teachers saw in the schemes.

- Teachers asked why there are two drop-off points planned in some of the schemes and added that they only need one drop-off, without a separate drop-off for Kindergarten. T. Long illustrated that certain drop-off schemes could be beneficial for community events.
- One community member commented that the Community Learning Center should be placed on the site to allow for future addition.
- J. Wheeler noted that all of these schemes respond to the original design premise that the existing Findley would remain in use until the new building is completed.
- One community member commented that it might be possible to use trailers, busing or building in phases, which would allow the use of the complete site but would require the current Findley school to be demolished before construction begins.
- Teachers prefer the scheme located toward Wall Street versus Tallmadge Street for both safety and sound separation.
- Teachers commented that they preferred Option A instead of C because there is more parking in Option A. J. Wheeler added this scheme could lend itself to future development of adjacent properties into a possible campus arrangement.
- Teachers commented that Option B is not ideal because it may not allow for future addition. R. Habel noted that this scheme "paints" us into a corner.
- One Teacher asked if it is possible to turn the building 45 degrees in Option B. R. Habel and J. Wheeler asked if there was a scheme the group preferred.
- Teachers preferred a drop-off on a minor street as opposed to a major street.
- The next Roll-Up Your Sleeves Meeting was scheduled for Monday, February 9, 2004 at 2:45 p.m. The next POR Meeting was scheduled for Tuesday, February 24, 2004 at 5:30 p.m.

The meeting adjourned at 7:30 p.m.

The preceding is AAG's interpretation of the meeting. Any changes, additions, or clarifications should be forwarded to our office as soon as possible. Unless these changes are furnished within ten (10) working days, it will be understood that all parties are in agreement with the preceding statements.

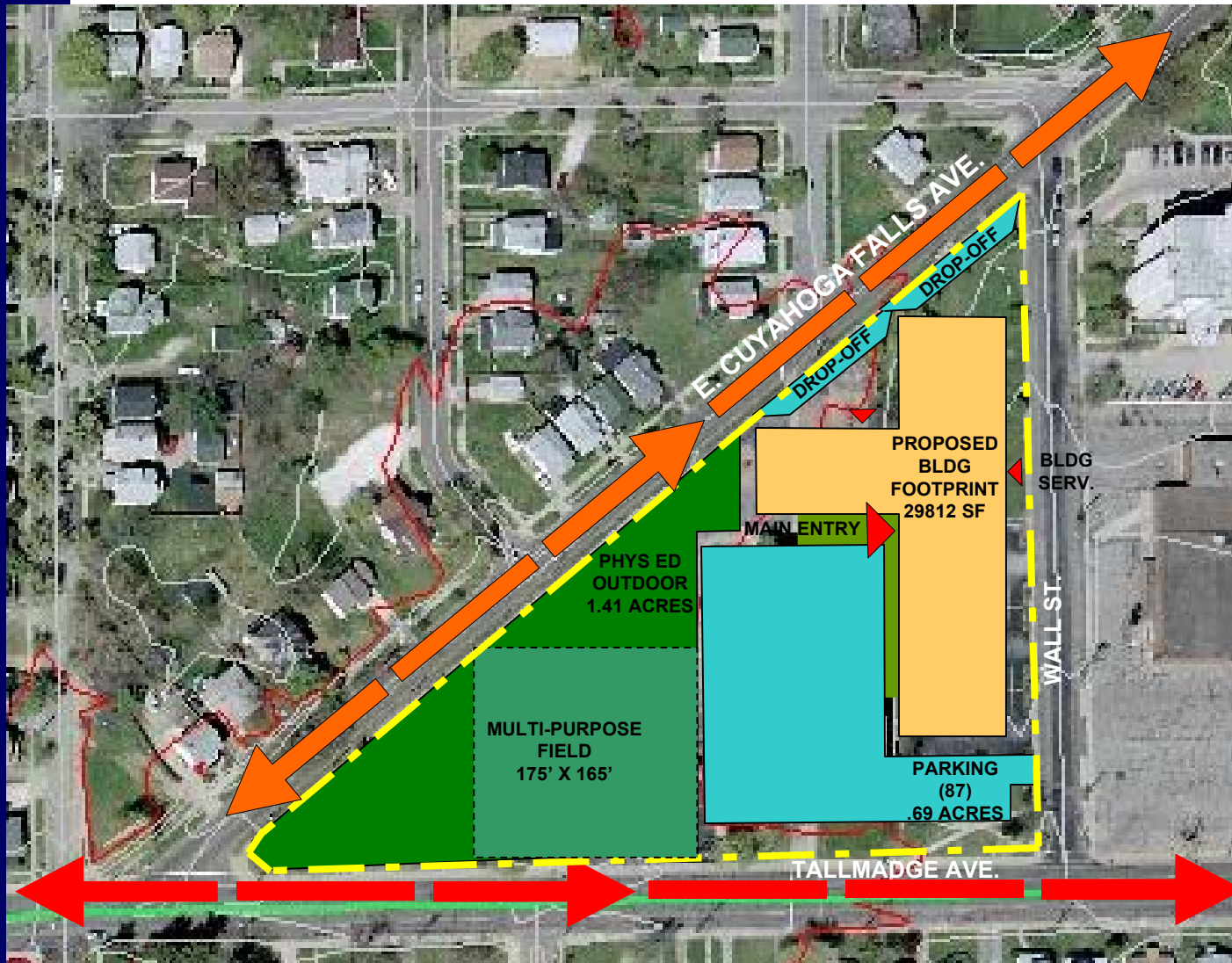
Attachments: Schemes A, B, C.



Existing Site Plan

Proposed Site Plan Option A

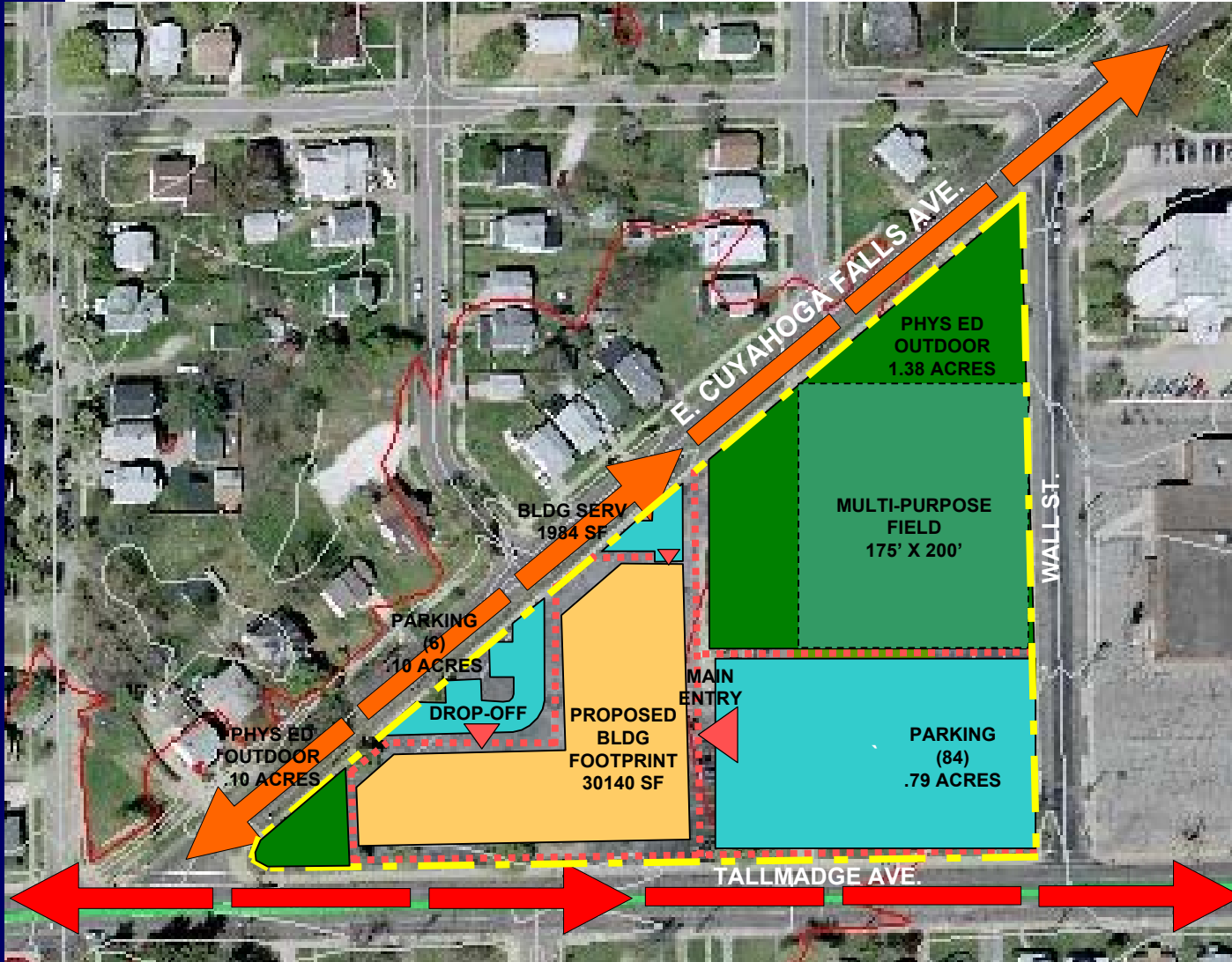
Findley Academy



Final Site Plan

Proposed Site Plan Option B

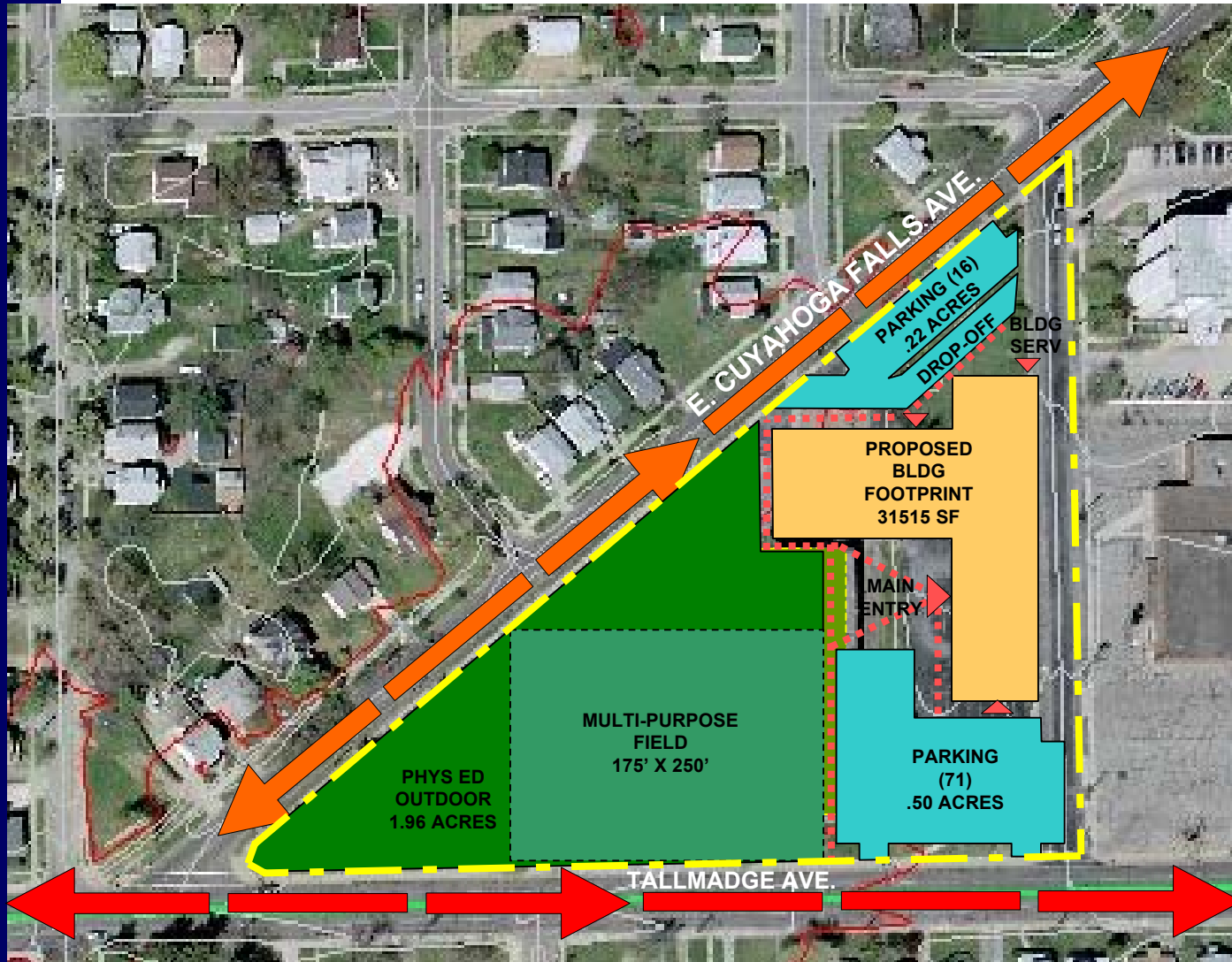
Findley Academy



Final Site Plan

Proposed Site Plan Option C

Findley Academy



Final Site Plan

520 South Main Street
Suite 2531
Akron, OH 44311
PH 330.572.2100
FX 330.572.2102

The Akron Architectural Group

Braun & Steidl Architects ▪ GPD Group ▪ Hasenstab Architects, Inc. ▪ Moody Nolan, Inc. ▪ TC Architects, Incorporated ▪ URS

AKRON PUBLIC SCHOOLS

Findley Community Learning Center Community Planning Team Meeting #3 Thursday, February 4, 2004

AFTER ACTION REVIEW (AAR)

1. Please list three positive outcomes.
 - Listened to concerns.
 - Still open to input.
 - Perception that teachers have a voice.
 - We were able to see some ideas.
 - It is good to see an option that takes us away from the noise of Tallmadge Avenue. The noise is unbelievable.
 - There was much more clarity and it was nice seeing the pictures. It helped a whole lot.
 - Forward thinking.
 - Future growth is addressed.
 - John had a nice tie.
 - Comments and discussion were encouraged and facilitator (John) listened.
 - I have a better understanding of hallway size now.
 - Listing showing pros and cons of "options" where/how to build Findley.
 - Appreciate maps/blueprints, but I can not visualize it. Could you do a small scale model with school, streets, parking lot, dropoff, etc.

2. What are your concerns?
 - We do not seem to get much done at each meeting. The Architects may want to spend a few hours observing student movement, use of space, etc.
 - Building size.
 - Natural light availability.
 - Storage availability.
 - Tallmadge Avenue - I think the plans facing Wall Street work the best because they lend to expansion.
 - End result will be rushed.
 - Location/environment of School Principal's Office regarding the need for separate office that can hold table (testing), chairs, desk, cabinet or shelves, room to bring

- parents in to talk, good light, soundproof, telephone, computer, door that shuts where kids feel safe when they disclose traumatic events.
- Door that can be locked so all the confidential files, testing kits, etc. can be stored. Technically, we can lose our license for not keeping all the above under lock and key.
 - Size of building even if APS says only x-number of kids will be enrolled. There are ways to get around that, such as what Special Education has done (long story). Plan for a larger number of kids.
 - Lack of community attendance at this meeting.
3. Do you have suggestions for improvements?
- More land?
 - Wall Street?
 - Agenda with objectives to be accomplished at this meeting. Recap of past meetings to head-off beating a dead horse. Give us a list of what we have control over.
 - ESL Room.
 - Work closely with AMHA for possible growth/duplicate uses. Ensure at least one member of every “department” is at the Roll-Up Your Sleeves Meeting (teachers, administrative, janitorial, etc.).
 - Gentleman’s suggestion about buying as much land now as possible makes a lot of sense.
4. How would you explain in 2 sentences what we have accomplished at this meeting?
- Given a much more specific idea of possible layout of building.
 - Listened to teacher’s pros and cons of visit.
 - It was great to see some options. It proves that slowly, but surely, we are moving ahead.
 - We are making great progress in narrowing the information down and we are coming close to making more decisions.
 - A lot of work to be done....I’ll get back to you on that.
 - There appears to be real communication. This is not a small thing, given the diverse group.

Distribution:

AAG Project Managers
D. Mitchell – AAG
M. Salopek - AAG
D. Loomis - APS
J. Beal – APS
T. Long – City of Akron
L. Jennings – Burges & Burges